

MEDICAL ONTOLOGIES FOR HEALTHCARE

SAP CONNECTED HEALTH PLATFORM



ABOUT SAP'S CONNECTED HEALTH PLATFORM

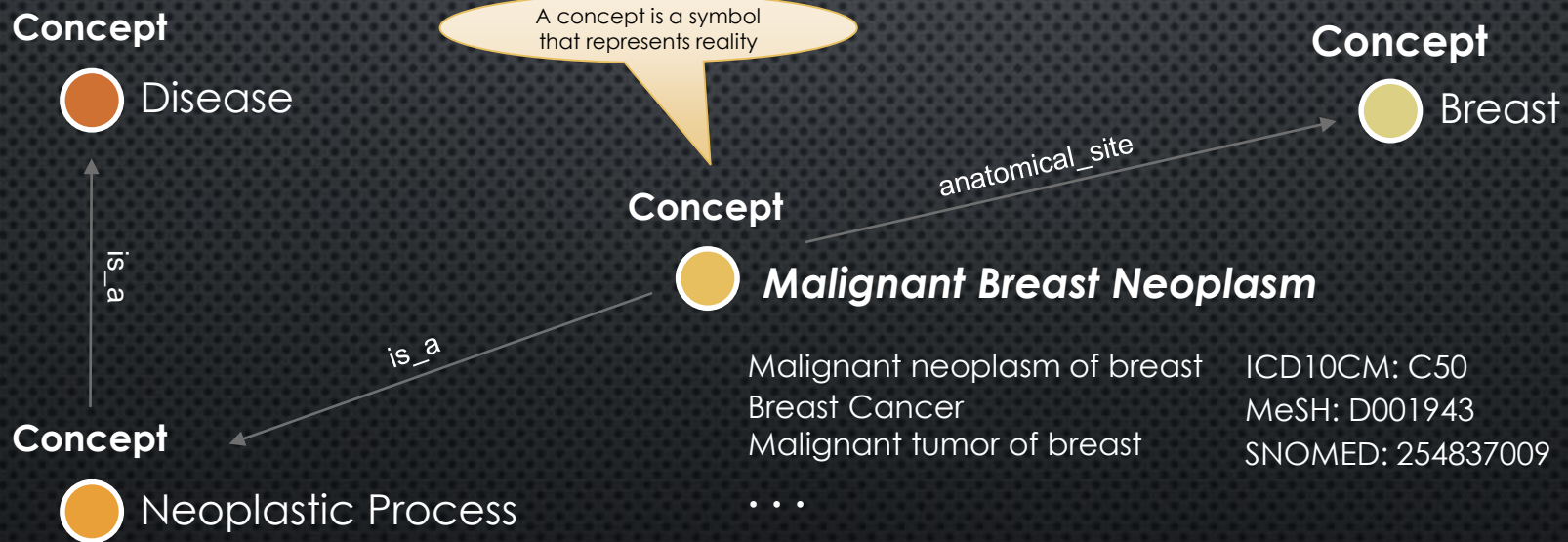
- PLATFORM FOR PERSONALIZED-MEDICINE APPLICATIONS
- ANALYSIS OF BIG MEDICAL DATA FROM VARIOUS SOURCES
- OPTIMIZE PATIENT OUTCOMES THROUGH PRECISION MEDICINE AND PREVENTION SUPPORT

ONTOLOGY

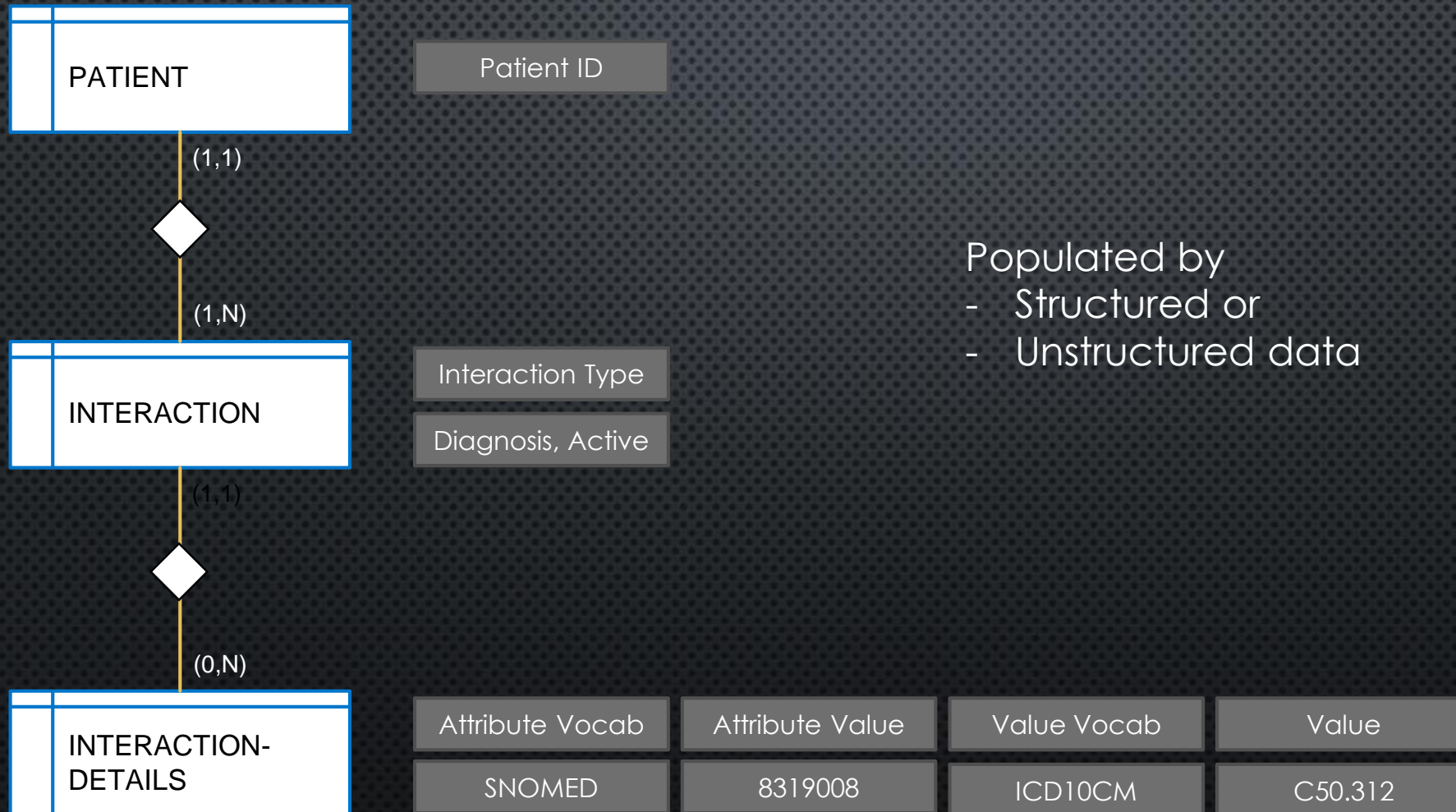
- ONTOLOGY IS A DISCIPLINE IN PHILOSOPHY. IT'S A META DESCRIPTION OF BEINGS AND THINGS THAT EXISTS.
- IN COMPUTER SCIENCE AN ONTOLOGY IS AS WELL A META DESCRIPTION. IT DESCRIBES THE MEANING OF DATA. IT CAN BE UNDER STOOD AS A KNOWLEDGE FRAMEWORK.

EXAMPLE

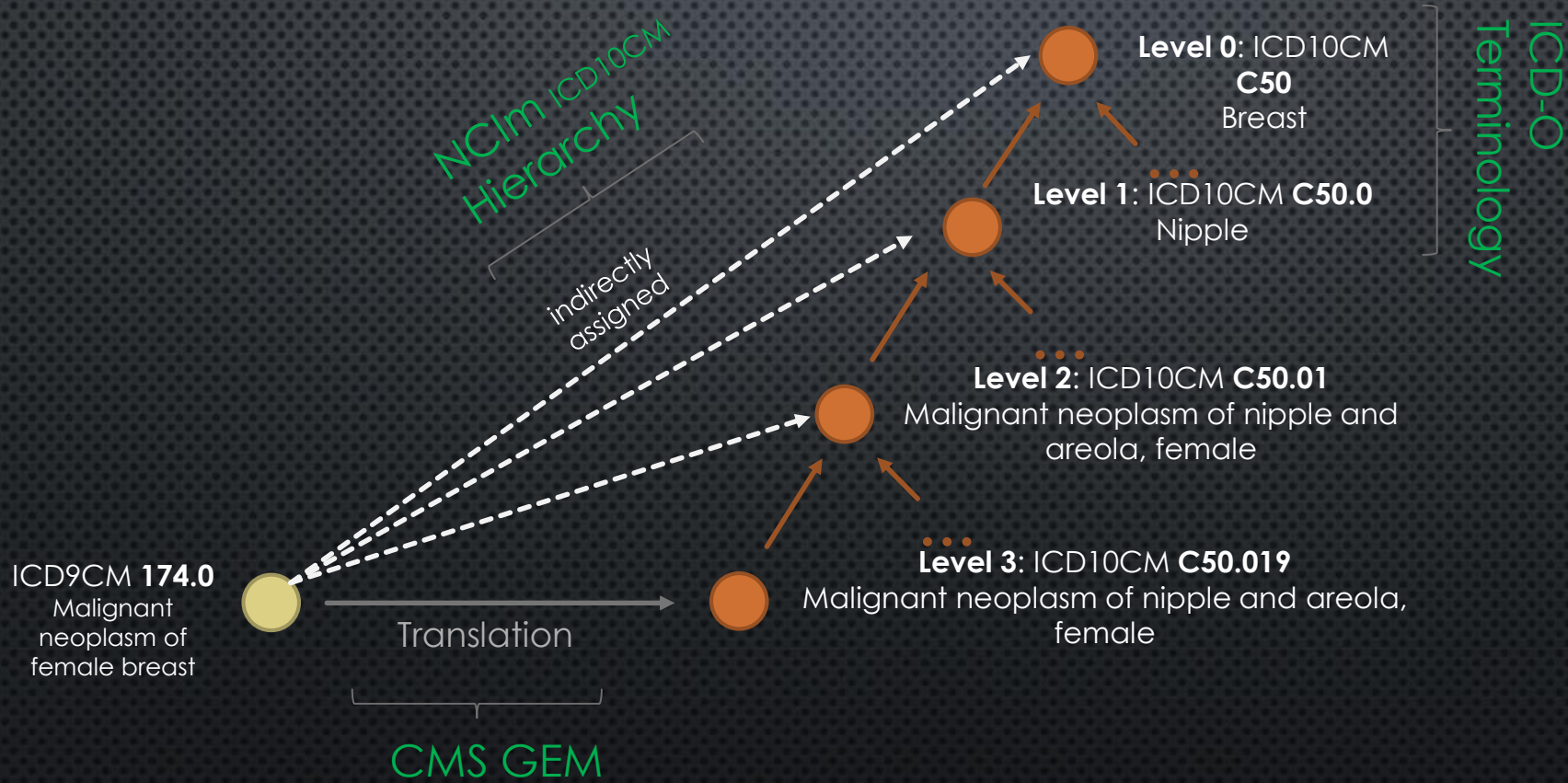
- AN ONTOLOGY IS ORGANIZED BY CONCEPTS



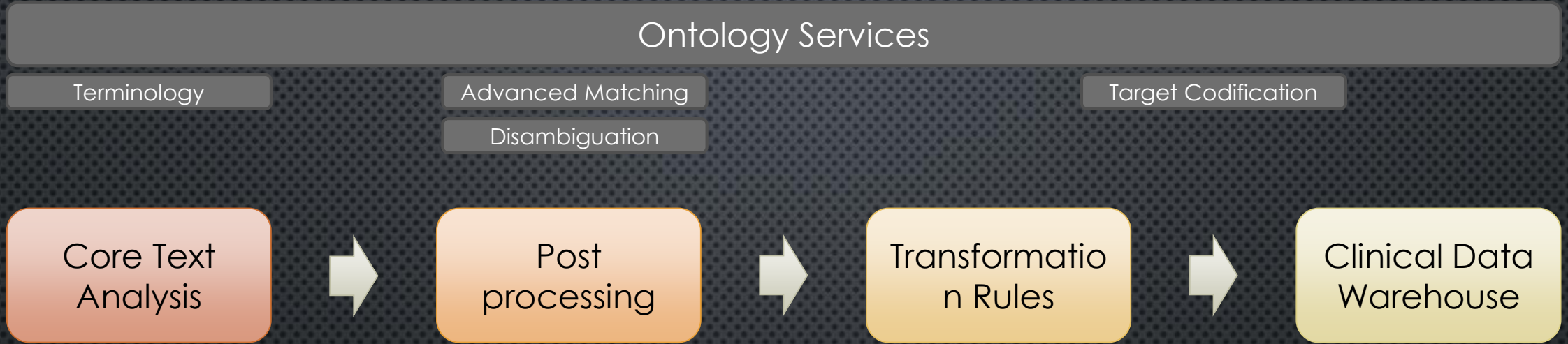
CLINICAL DATA MODEL



DISEASE CLASSIFICATION



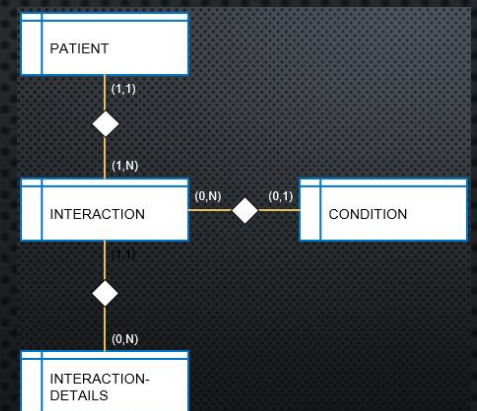
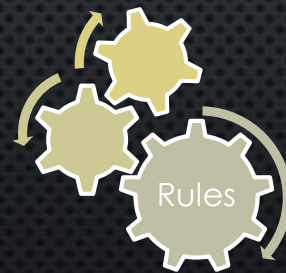
DEMO: DATA INGESTION WITH NLP PIPELINE



Entity type: **Therapeutic procedure**
Canonical form: **C0162577@NCIm**

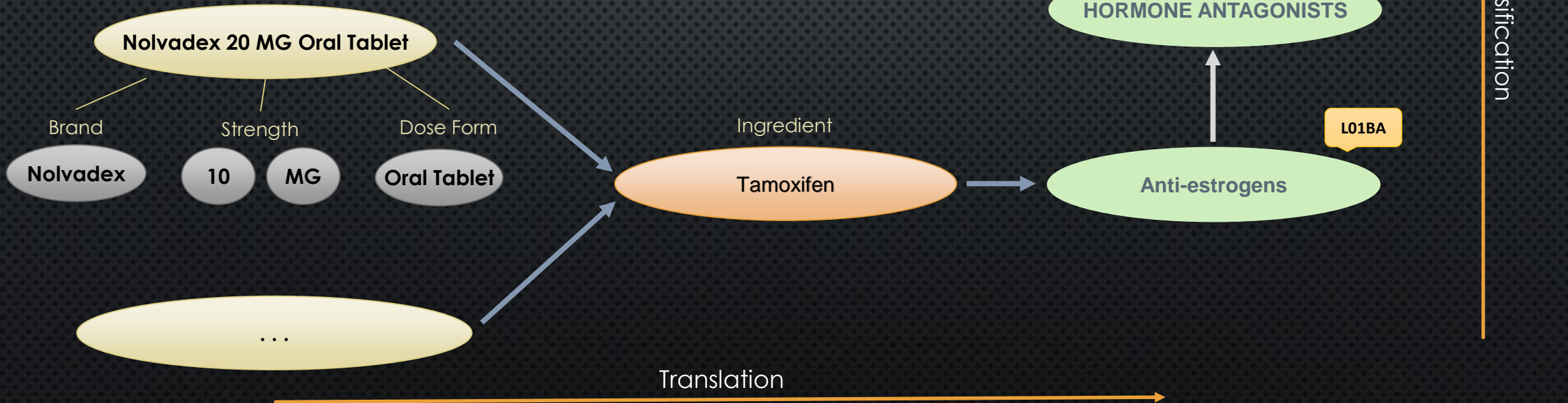
The patient refused **angioplasty**

Modality: **Factual**
Polarity: **Negative**
Reference: **Associated with patient**



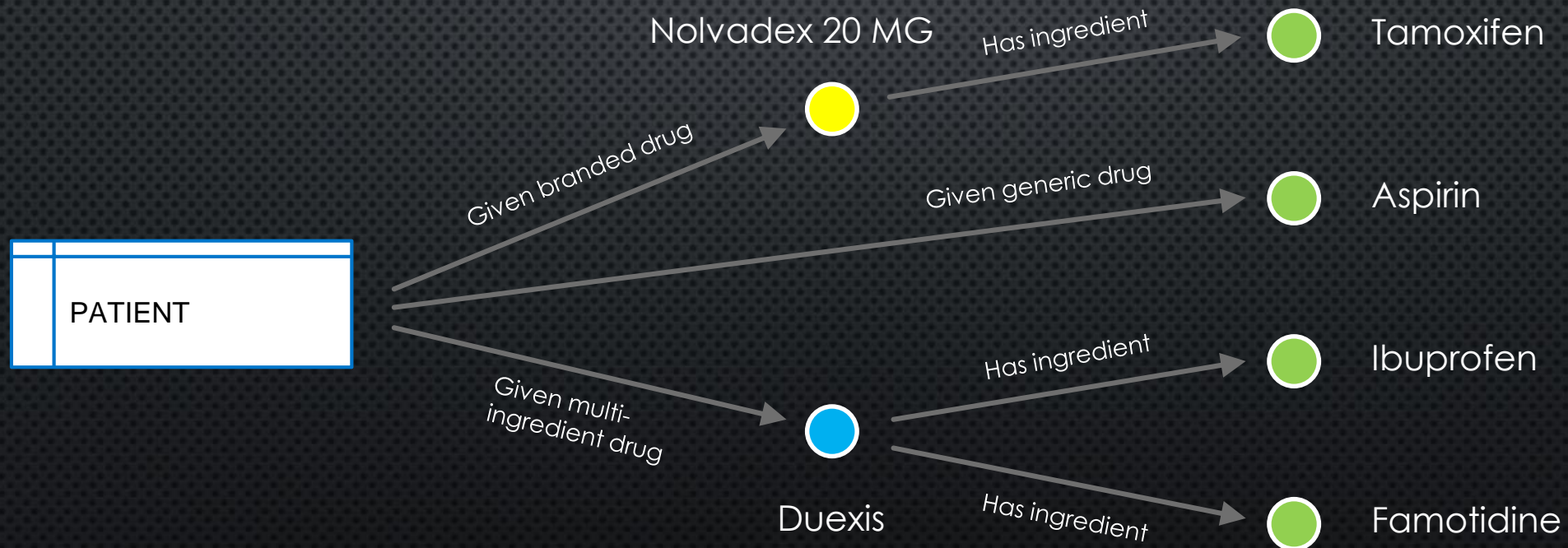
DRUG CONTENT

- SUPPORT FOR DIFFERENT DRUG VOCABULARIES
- TRANSLATIONS BETWEEN BRAND, GENERICS AND INGREDIENT
- CLASSIFICATION LIKE ANATOMICAL THERAPEUTIC CHEMICAL



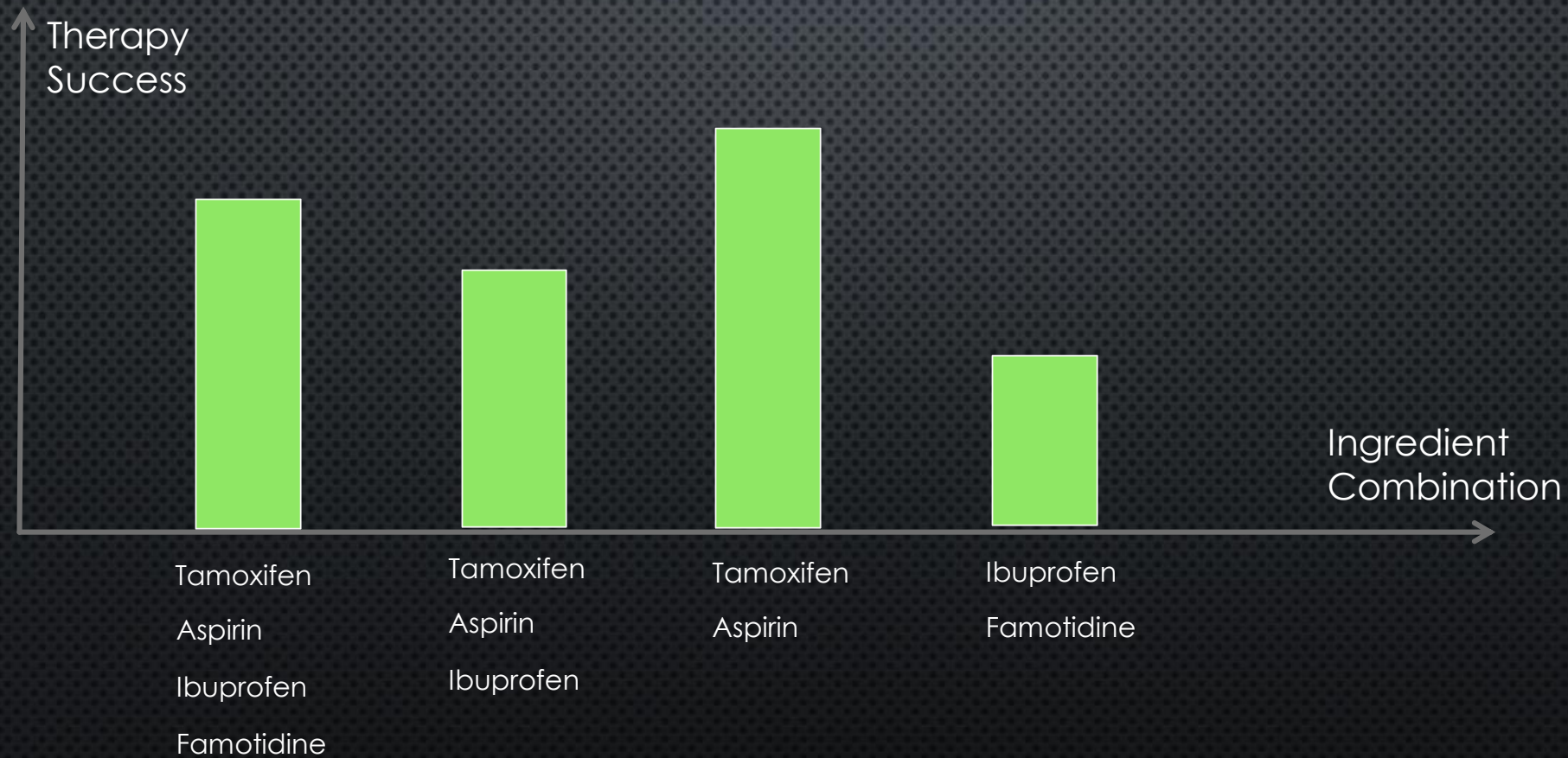
PATIENTS WITH SAME MEDICATION

- **PROBLEM DESCRIPTION:** TO ANALYZE THE SUCCESS OF A MEDICATION – INCLUDING DRUG INTERACTIONS, A CERTAIN COHORT OF PATIENTS SHALL BE DIVIDED INTO GROUPS WHOSE MEMBERS GOT THE EXACT SAME COMBINATION OF INGREDIENTS
- **MEDICATION DATA WILL BE INHOMOGENEOUS:** THEY MAY BE GIVEN BY BRAND NAME, BY INGREDIENT DIRECTLY, OR AS MULTI-INGREDIENT DRUGS



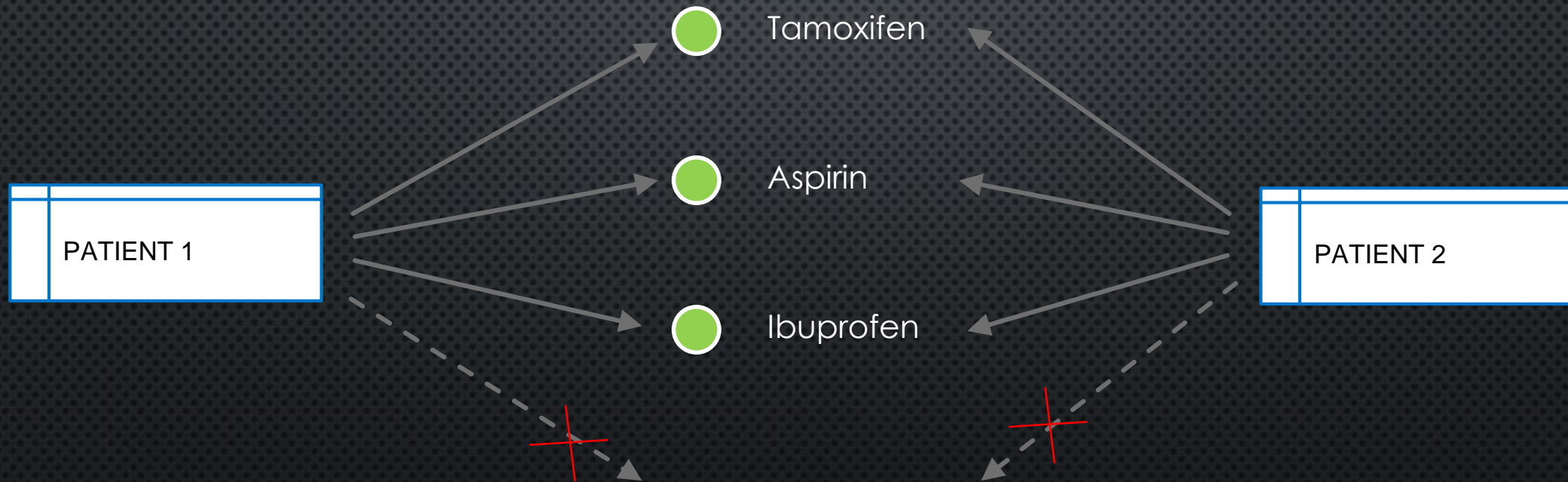
PATIENTS WITH SAME MEDICATION

- POSSIBLE USE CASE: SHOW DIAGRAM WITH THERAPY SUCCESS DEPENDING ON THE COMBINATION OF INGREDIENTS



PATIENTS WITH SAME MEDICATION

- **SIMPLIFYING** ASSUMPTION: INGREDIENTS ARE ASSIGNED DIRECTLY
- HOW TO FIND PATIENTS WITH EXACTLY THE SAME COMBINATION OF INGREDIENTS



PATIENTS WITH SAME MEDICATION

- CYPHER SNIPPET FOR FINDING PATIENTS WITH THE SAME ADMINISTERED INGREDIENTS

```
MATCH (patient1:Patient) -[:GOT_INGREDIENT]-> (ingredient) <-[:GOT_INGREDIENT]- (patient2:Patient)
WITH patient1, collect(ingredient.Code) as commonIngredients, patient2
WHERE size((patient1) -[:GOT_INGREDIENT]-> ()) = size(commonIngredients)
      and
      size((patient2) -[:GOT_INGREDIENT]-> ()) = size(commonIngredients)
RETURN patient1.Name, commonIngredients, patient2.Name
```

PATIENTS WITH SAME MEDICATION

- IDEA FOR LANGUAGE SUPPORT OF SET AGGREGATION

```
MATCH (patient1:Patient) -[:GOT_INGREDIENT]-> (ingredient) <-[:GOT_INGREDIENT]- (patient2:Patient)
WHERE UNORDERED_SET{ (patient1) -[:GOT_INGREDIENT]-> (ingred) | ingred.Code } =
      UNORDERED_SET{ (patient2) -[:GOT_INGREDIENT]-> (ingred) | ingred.Code }
RETURN patient1.Name, collect(ingredient.Code), patient2.Name
```

- SIMILAR TO PATTERN COMPREHENSION:

```
[ (patient1) -[:GOT_INGREDIENT]-> (ingred) | ingred.Code ]
```

SUMMARY

- ONTOLOGY SERVICES: **TOOL TO UNDERSTAND THE MEANING OF CLINICAL DATA**
- USE CASES
 - TRANSLATIONS & INTEROPERABILITY BETWEEN VOCABULARIES
 - CATEGORIZATION / CLASSIFICATION OF CLINICAL DATA
 - INTEGRATION WITH NLP
 - INTEGRATION WITH DATA INGESTION
 - CONTENT ASSESSMENT & EVALUATION

Q & A

© 2016 SAP SE or an SAP affiliate company. All rights reserved.

No part of this publication may be reproduced or transmitted in any form or for any purpose without the express permission of SAP SE or an SAP affiliate company.

SAP and other SAP products and services mentioned herein as well as their respective logos are trademarks or registered trademarks of SAP SE (or an SAP affiliate company) in Germany and other countries. Please see <http://global12.sap.com/corporate-en/legal/copyright/index.epx> for additional trademark information and notices.

Some software products marketed by SAP SE and its distributors contain proprietary software components of other software vendors.

National product specifications may vary.

These materials are provided by SAP SE or an SAP affiliate company for informational purposes only, without representation or warranty of any kind, and SAP SE or its affiliated companies shall not be liable for errors or omissions with respect to the materials. The only warranties for SAP SE or SAP affiliate company products and services are those that are set forth in the express warranty statements accompanying such products and services, if any. Nothing herein should be construed as constituting an additional warranty.

In particular, SAP SE or its affiliated companies have no obligation to pursue any course of business outlined in this document or any related presentation, or to develop or release any functionality mentioned therein. This document, or any related presentation, and SAP SE's or its affiliated companies' strategy and possible future developments, products, and/or platform directions and functionality are all subject to change and may be changed by SAP SE or its affiliated companies at any time for any reason without notice. The information in this document is not a commitment, promise, or legal obligation to deliver any material, code, or functionality. All forward-looking statements are subject to various risks and uncertainties that could cause actual results to differ materially from expectations. Readers are cautioned not to place undue reliance on these forward-looking statements, which speak only as of their dates, and they should not be relied upon in making purchasing decisions.